

Belmont Bulletin

Issue 4, August 2024



In this edition



**Our shared vision
for the future**



**Winter planting
season**



**Belvidere
street art**

Message from the Mayor

Dear City of Belmont community,

Driving around our city fills me with pride as I witness the transformation of our roundabouts, cul-de-sacs, and green spaces. I want to express my appreciation to our dedicated council workers whose hard work is slowly but surely beautifying our city.

It's been particularly uplifting to see so many plants flowering during these wet, cold weeks.

Thank you to everyone who visited the Makuru Community Markets! It was heartwarming to see so many connections made. One standout was the High Streets Belmont Town Team Movement stall, demonstrating the power of community collaboration in improving our city.

We received an overwhelming response to our annual Art Awards, with over 580 applications, including submissions from many talented young local artists. I'm continually inspired by

the creativity within our community and eagerly anticipate the exhibition later this month. Admission is free, so why not escape the cold weather and immerse yourself in locally grown art from Western Australia?

Finally, opportunities are everywhere in the City of Belmont. Let's continue to connect, learn, and grow together.

I look forward to seeing you out and about in our community. Please don't hesitate to say hello and introduce yourself whenever you see me. I'm genuinely interested in hearing your comments and ideas for our city.

Thank you and stay safe.

Robert ROSSI
MAYOR

M 0408 693 584

E mayorrossi@belmont.wa.gov.au

Term expires: 16 October 2027



Your City of Belmont Councillors

West Ward

Cr Deborah SESSIONS
DEPUTY MAYOR

M 0403 907 856

E crsessions@belmont.wa.gov.au

Term expires: 18 October 2025



Cr Christopher KULCZYCKI

M 0404 767 583

E crkulczycki@belmont.wa.gov.au

Term expires: 16 October 2027



Central Ward

Cr George SEKULLA, JP

M 0431 963 660

E crsekulla@belmont.wa.gov.au

Term expires: 18 October 2025



Cr VIJAY

M 0430 052 715

E crvijay@belmont.wa.gov.au

Term expires: 16 October 2027



East Ward

Cr Phil MARKS

M 0417 998 229

E crmarks@belmont.wa.gov.au

Term expires: 16 October 2027



Cr Bernie RYAN

M 0418 941 328

E crryan@belmont.wa.gov.au

Term expires: 18 October 2025



South Ward

Cr Jenny DAVIS

M 0413 579 390

E crdavis@belmont.wa.gov.au

Term expires: 18 October 2025



Cr Janet Powell

M 0407 277 391

E crpowell@belmont.wa.gov.au

Term expires: 18 October 2025



To find out more about your City of Belmont Councillors and their committees visit:
www.belmont.wa.gov.au/yourcouncil



Acknowledgement of country

The City of Belmont acknowledges the Whadjuk Noongar people as the Traditional Owners of this land and we pay our respects to Elders past, present and emerging. We further acknowledge their cultural heritage, beliefs, connection and relationship with this land which continues today.

We acknowledge all Aboriginal and Torres Strait Islander peoples living within the City of Belmont.



With input from over 1,500 community members and key partners, we've developed our new Strategic Community Plan and Corporate Business Plan.

These plans address immediate community needs and long term goals.

We would like to thank everyone who contributed. It's helped create a plan that truly reflects the values and priorities of the community.



Our key performance outcomes

People	Planet	Place	Prosperity	Performance
<ol style="list-style-type: none"> 1. A safe, healthy community. 2. A strong sense of pride, belonging and creativity. 3. People of all ages and abilities feel connected and supported. 	<ol style="list-style-type: none"> 4. Healthy and sustainable ecosystems. 5. Climate resilience. 	<ol style="list-style-type: none"> 6. Sustainable population growth with responsible urban planning. 7. Attractive and welcoming places. 8. A city that is easy to get around safely and sustainably. 	<ol style="list-style-type: none"> 9. A progressive, vibrant and thriving economy with active participation in life long learning. 	<ol style="list-style-type: none"> 10. Effective leadership, governance and financial management. 11. A happy, well informed and engaged community.

belmont.wa.gov.au/plans-and-strategies

belmont@belmont.wa.gov.au

9477 7222

Growing Garvey Park

With the help of some green thumbed community members, we planted approximately 3,000 plants to help create an open forest in pockets of Garvey Park.

We were very fortunate to receive funding to revegetate this natural community asset

through the Department of Biodiversity, Conservation, and Attractions' Swan Canning Riverpark Urban Forest program.

The project will span over the next two years and will see 1.6 hectares of natural bushland transformed.

- 🌐 connect.belmont.wa.gov.au/garvey-park-ecological-connectivity-upgrade
- ✉ environment@belmont.wa.gov.au
- 📞 9477 7222



Verge garden glow ups

Thank you to everyone who got involved in our first verge garden program!

Residents will be creating a verge garden this winter, with over 2,000 advanced native plants given away.

If you missed out and would like to create your own garden, check out our Verge Garden Makeover Guide for some inspiration. →

Keep an eye out for your opportunity to participate - the verge garden program will return in winter 2025.

- 🌐 belmont.wa.gov.au/verge-maintenance
- ✉ environment@belmont.wa.gov.au
- 📞 9477 7222



Caring for our verges

Did you know that verges are a part of our road reserves and are classified as a public thoroughfare?

If you would like to enhance your verge, check out our Verge Greening Guidelines to ensure the treatments are in line with the City's Consolidated Local Law.

- 🌐 belmont.wa.gov.au/verge-maintenance
- ✉ parks@belmont.wa.gov.au
- 📞 9477 7222

Greening our community

This winter we will be planting approximately 3,000 new trees to expand our urban forest.

These trees will support community health and wellbeing by providing additional shade and amenity throughout our public spaces.

Forty species have been carefully selected and grown for planting along our streets and verges, including both native and exotic trees. Having a variety of trees helps keep our urban forest strong and healthy.

When deciding where to plant new trees we consider several factors, such as:

- distance from intersections and infrastructure
- height and clearance requirements
- verge size and surrounding land uses
- dominant tree species and overall variety
- availability and quality of nursery stock.

If you see a mark on the verge near your home, it means a new street tree might be planted there soon. We will take care of these trees and provide ongoing maintenance when needed.

This year's streetscape planting program is well underway with roundabouts, cul-de-sacs and verges being brightened with native plants and landscaping.

Together, let's green our streets and create a more sustainable environment for everyone to enjoy.

- 🌐 belmont.wa.gov.au/trees
- ✉ parks@belmont.wa.gov.au
- 📞 9477 7257

Local students make their mark on Belvidere Street



We've launched a new temporary artwork installation, created by Minaxi May, a multidisciplinary artist, and students from Belmay Primary School, to bring a burst of colour and creativity to Belvidere Street.

The project involved 26 children (aged 10 to 12) working with Minaxi May to create an artwork for the corner location.

🌐 belmont.wa.gov.au/public-art
 ✉ artsandplace@belmont.wa.gov.au
 ☎ 9477 7222

The temporary fence art installation was created through a workshop process with the Year 5 and 6 class where they explored kirigami, the art of folding and cutting paper to make unique shapes.

Students created around 50 kirigami cutouts in a variety of shapes and colours. Minaxi then took the shapes, scanned them and used digital software to arrange

the cutouts into a layered pattern to fit the central and side panels of the fencing. The design was turned into a vinyl print and installed on the fence.

The artwork is a new placemaking initiative that involved the community in a collaborative artwork. It can be viewed on Belvidere Street, on the corner with Keymer Street in Belmont.

Opportunity to connect ★

Justice of the Peace signs off

After nearly 15 years of voluntary service, Joy Harding has witnessed her final signatures as a Justice of the Peace at the City of Belmont. Joy's commitment to being a JP is awe-inspiring, especially considering her hour long commute from Bakers Hill.

We wish Joy and her husband the very best as they spend more time tending to their sheep and alpacas, and travelling around Australia.

Our part-time JP signing service is available at the Civic Centre on Mondays, Wednesdays, and Fridays from 11am to 1pm.



Supporting our local businesses

We understand the important role local businesses play in creating a vibrant community.

One of the ways we show our support is through sponsoring the Belmont and Western Australian Small Business Awards Best New Business category.

Coordinated by the Belmont Business Enterprise Centre, the awards recognise and encourage individual and small business achievements over the past year.



Do you know a small business that deserves recognition?

Entry is free and there are 22 award categories. Nominations close on 24 September.

🌐 belmont.wa.gov.au/business-awards
 ✉ business@belmont.wa.gov.au
 ☎ 9477 7222



Rates

Rates were issued on 30 July 2024, with a range of payment options for ratepayers at no additional cost. We also offer financial hardship assistance for those who need it.

You can choose to pay in full by 2 September 2024 to receive a 5% discount, pay in instalments or take advantage of our new SmoothRates, which allow for smaller, more manageable payments throughout the year.

Haven't received your notice yet? Let us know so we can check your details and organise another copy.

🌐 belmont.wa.gov.au/rates
 ✉ rates@belmont.wa.gov.au
 ☎ 9477 7222

Events and programs

KEY No tickets required Free ticketed event Paid ticketed event
 Free resident tickets, paid non-residents tickets Contact us for more information



Speaker Series: Science Week

Wednesday 14 August, 5:45pm to 6:45pm
Events Room, Ruth Faulkner Library, 213 Wright Street, Cloverdale

Join scientist Kathy Kuper from Curtin University to speak about her experiences as a woman in STEM.

For adults and young people 16+ years



Turtle Trackers

Wednesday 21 August, 6pm to 8:30pm
Events Room, Ruth Faulkner Library, 213 Wright Street, Cloverdale

Hear from Dr Anthony Santoro about the program and how you can help save our local turtles.



Historia: Remarkable Romans

Sunday 25 August, 2pm to 3pm
Innovation Lab, Ruth Faulkner Library, 213 Wright Street, Cloverdale

Explore the intriguing history of Ancient Roman Baths and craft your own mosaic coasters.

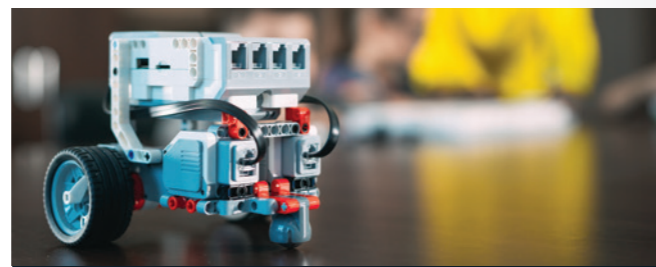
For children 8 to 13 years



Artist Talk Series: Di Cubitt

Thursday 15 August, 5:30pm to 6:30pm
Events Room, Ruth Faulkner Library, 213 Wright Street, Cloverdale

Hear artist Di Cubitt talk about her art practice, current and past projects.



STEAM Lab: LEGO Spike

Saturday 24 August, 12:30pm to 2pm
Innovation Lab, Ruth Faulkner Library, 213 Wright Street, Cloverdale

Work in a team to design and code a LEGO robot. No previous experience required.

For young people 12 to 18 years



Art Awards Opening Night Event

Friday 30 August, 6pm to 8:30pm
The Glasshouse, 215 Wright Street, Cloverdale

Celebrate our winners and purchase artworks from local and emerging artists.

For adults 18+ years



Hands on History: Japanese Tea Ceremony Experience

Sunday 1 September, 1:30pm to 3:30pm, various 30 minute sessions

Innovation Lab, Ruth Faulkner Library, 213 Wright Street, Cloverdale

A Japanese tea ceremony experience where a bowl of matcha will be waiting for you.

For adults



Speaker Series: Shark Biology

Wednesday 25 September, 5:45pm to 6:45pm

Events Room, Ruth Faulkner Library, 213 Wright Street, Cloverdale

Join shark biologist Amanda Elizabeth, to explore the underwater world of sharks.

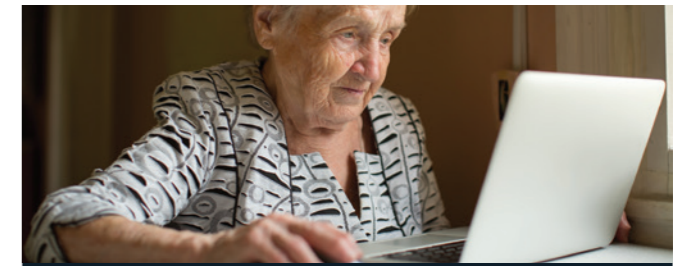
For adults and young people 16+ years



Community Markets in Djilba

Sunday 29 September, 10am to 2pm
The Glasshouse, 215 Wright Street, Cloverdale

Shop a range of boutique stalls at our family-friendly arts and craft markets.



Belmont Interest Group: Safety Online for Seniors

Friday 6 September, 2:30pm to 4:30pm
Seniors Activity Hall, Belmont Hub, 213 Wright Street, Cloverdale

Learn how to use the internet safely and protect yourself online.

For adults and seniors



Intergenerational Music and Movement

Saturday 28 September, 10:30am to 11:30am

Children's Space, Ruth Faulkner Library, 213 Wright Street, Cloverdale

A fun-filled musical and movement session for the young and young at heart!

For seniors and families with children 2 to 5 years



Belmont Interest Group: Big Mood Food

Friday 4 October, 2:30pm to 4:30pm
Seniors Activity Hall, Belmont Hub, 213 Wright Street, Cloverdale

Join Dietitian Nick Nation for a discussion on the impact food has on your brain and body.

For adults and seniors

Opportunity to belong

Women's Multicultural Friendship Group

It's community groups like the Multicultural Women's Friendship Group that prove everyone has the opportunity to belong in our community.

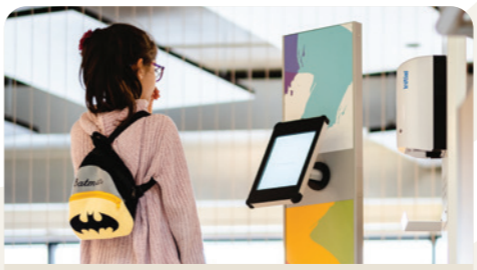
This group is an amazing space for women from multicultural backgrounds to get together regularly, share stories, have a chat over morning tea, and make new friends.

The group is led by volunteer Sabah Suleiman. We asked Sabah why she enjoys volunteering, and her answer speaks volumes.



"Helping someone have a great day and giving them a reason to smile is what it's all about."

belmont.wa.gov.au/community
community.development@belmont.wa.gov.au
 9477 7222



What do you think of our library?

Participate in our library survey for a chance to win a \$100 QBD book voucher. Your feedback will help us plan for the future and enhance our services.

connect.belmont.wa.gov.au/library-survey
 Survey closes 7 September



Walk, wheel and ride with the Your Move Map!

Our Your Move Map is the ultimate guide to walking, riding or using public transport in the City of Belmont.

You can access the map online, or pick-up a hard copy at the City of Belmont Civic Centre. Both standard and large print versions are available.

belmont.wa.gov.au/your-map
belmont@belmont.wa.gov.au
 9477 7222



School holidays at Ruth Faulkner Library

Join us this coming School Holidays for fun activities featuring our furry friends! Watch out for events such as a hands-on experience with Mini Beasts, a visit from West Oz Wildlife and more!

belmont.wa.gov.au/library
libraryandmuseum@belmont.wa.gov.au
 9477 7150

Hamish the Bear on holidays

Our favourite bear, Hamish, is going on vacation for some well-deserved rest.

While on holidays, Hamish will still be responding to postcards received in the Belmont Museum post box.

Keep an eye out for Hamish's friends, the Belmonsters, who will be watching the Museum in his place!

Visit the changing displays in Belmont Museum any time during opening hours.



belmont.wa.gov.au/library
libraryandmuseum@belmont.wa.gov.au
 9477 7150

Can we count you in?

Are you looking to improve your health and wellbeing but don't know where to start?

CountUSin is a 10 week wellness program available to City of Belmont residents 18 years and over who are not working full time.

The program consists of two group gym-based exercise sessions and alternating cooking and outdoor fitness sessions each week led by experienced health professionals.

Included in the program is a heavily discounted gym membership at Belmont Oasis Leisure Centre.

belmont.wa.gov.au/countusin
healthy.communities@belmont.wa.gov.au
 9477 7438

What past participants are saying:

"A great experience. The Mentors were amazing, thoughtful, knowledgeable, and caring. The group was also fantastic, and I hope to see some at the gym in the future."

"Mentors were fantastic! I am extremely happy to have participated in this program. It has kick started me on a new healthy lifestyle."





Join the community fun this summer!

Local sporting clubs help our community develop new skills and discover their potential through teamwork, healthy competition and most importantly, fun!

The summer sporting season is just around the corner and now is a great time to contact your local sporting clubs and register your interest. Summer sports can include cricket, athletics, tee ball, baseball, kayaking/paddling, swimming, tennis or lawn bowls.

🌐 belmont.wa.gov.au/sporting-clubs
 ✉ recreation@belmont.wa.gov.au
 ☎ 9477 7454

KidSport

KidSport has increased from \$300 to \$500 per eligible child per financial year!

The program provides financial assistance to families to ensure all kids have the opportunity to participate in sport, remain active and build long lasting friendships.

Not only can the vouchers go towards club

🌐 belmont.wa.gov.au/kidsport
 ✉ recreation@belmont.wa.gov.au
 ☎ 9477 7454

Get fit and give back

Reach your fitness goals for the greater good at Belmont Oasis Leisure Centre.

Every time a new member joins Belmont Oasis in August 2024 on the \$299 for six months special, \$100 will be donated to a local school, charity or sporting club of their choice.

For more information and terms and conditions, please visit www.getfitgiveback.com.au or contact the City.

🌐 belmont.wa.gov.au/belmont-oasis-leisure-centre
 ✉ recreation@belmont.wa.gov.au
 ☎ 9477 7454



registration fees, they can also be used towards essential playing equipment and uniforms.

KidSport is available to children between 5 and 18 years who are named on a valid Health Care Card or Pensioner Concession Card.

KidSport is delivered by the Department of Local Government, Sport and Cultural Industries in partnership with local governments throughout Western Australia.



Congratulations to our local sporting super stars

Congratulations to our sporting donation recipients who have excelled in their sport:



→ **Sarah Vollrath-Hale**
 National AFL 12's Girls Championships, Victoria

→ **Nate Tomasini**
 National Indoor Junior Cricket Championships, Melbourne

→ **Jahmaraan Taingahue**
 Junior Māori Rugby League Tournament, New Zealand

→ **Tamieka Whitefield**
 2024 WBSC Womens Softball World Cup, Italy



→ **Fynn Tomasini**
 National Indoor Junior Cricket Championships, Melbourne

→ **Trent D'Alessio**
 2024 Junior International Tour Malaysia, Kuala Lumpur

→ **Zeeahra Anderson**
 National AFL 15s Girls Championships, Queensland

→ **Samuel Akkinapalli**
 National Indoor Junior Cricket Championship, Melbourne

If you're representing your sport in a national or international competition, we'd love to hear from you.

🌐 belmont.wa.gov.au/sporting-donations
 ✉ recreation@belmont.wa.gov.au
 ☎ 9477 7222



Know your



FOGO

With the transition to FOGO, it's important to know what you can and can't put into your FOGO bin.



What can go in my green lid FOGO bin:

- ✓ food scraps
- ✓ fruit and vegetables
- ✓ bread, rice and dairy
- ✓ meat, bones, shells and seafood
- ✓ coffee grounds
- ✓ used paper towels
- ✓ plants and weeds
- ✓ compostable liners.



What can't go in my green lid FOGO bin:

- ✗ no plastic bags
- ✗ no nappies
- ✗ no plastic
- ✗ no glass.



On the roads

Location	Section	Description of Works
Ascot Place	Epsom Avenue to cul-de-sac	Asphalt overlay
Epsom Avenue	Ennis Place to Ascot Place	Asphalt overlay
Ennis Place	Epsom Avenue to cul-de-sac	Asphalt overlay
Lyall Street	Matheson Road to cul-de-sac	Asphalt overlay
Nisbet Street	Matheson Road to Thomson Street	Asphalt overlay
Hardey Road	HN17 to HN27	Asphalt overlay
Raconteur Drive	Hardey Road to Resolution Drive	Asphalt overlay
Matheson Road	Bridle path	Asphalt overlay and railing upgrade
Daly Street	Oswell Street intersection	Kerb realignment
Campbell Street	Fitzroy Road to St Kilda Road	Asphalt overlay

For a full list of all upcoming road, drainage, and footpath projects or to report a problem visit our website or contact the City.

belmont.wa.gov.au/on-the-roads
belmont@belmont.wa.gov.au
 9477 7118



Redcliffe Area Traffic Study

We're conducting a traffic study in the Redcliffe area to consider current and future traffic movement and what safety and amenity improvements may be needed.

The study will assess community feedback, road usage, public transport routes, cycle paths, and pedestrian access as well as planned future developments.

connect.belmont.wa.gov.au/redcliffe-area-traffic-study
belmont@belmont.wa.gov.au
 9477 7222



Explore and
celebrate
our creative
community
at the

City of Belmont

ART

AWARDS

EXHIBITION

Held over two weeks, the free exhibition features 300 original and unique artworks from local community members and artists across the state.

With an array of different mediums from artists of all ages, it's a special opportunity to discover local stories and support the arts by purchasing a work for your home or business.

Thank you to our sponsors:



belmont.wa.gov.au/art-awards
artsandplace@belmont.wa.gov.au
9477 7248

Key events



Art Awards Exhibition

Saturday 31 August to Saturday 14 September
Open Tuesday to Sunday, 10am to 4pm
The Glasshouse, 215 Wright Street, Cloverdale



Textured Painting with Palette Knives Workshop

Saturday 7 September
10am to 12pm
The Glasshouse, 215 Wright Street, Cloverdale



Pottery and Sgraffito Workshop

Saturday 14 September
10am to 12pm
The Glasshouse, 215 Wright Street, Cloverdale

City of Belmont, 215 Wright Street, Cloverdale WA 6105
Locked Bag 379, Cloverdale WA 6985
Open 8:30am to 4:45pm, Monday to Friday

Local residents will receive a copy of the Belmont Bulletin approximately every 2 months.

PH: 08 9477 7222
A/H: 08 9477 7224
belmont@belmont.wa.gov.au
belmont.wa.gov.au

